

CONCORD ADEX - Residential Highrise

TORONTO, ON

02

Busby + Associates Architects designed the Signature Tower as part of the Concord Adex development in downtown Toronto known as "City Place". This Signature Tower is a simple, effective and distinctive statement, providing the entire development with a "centre" and a design identity.

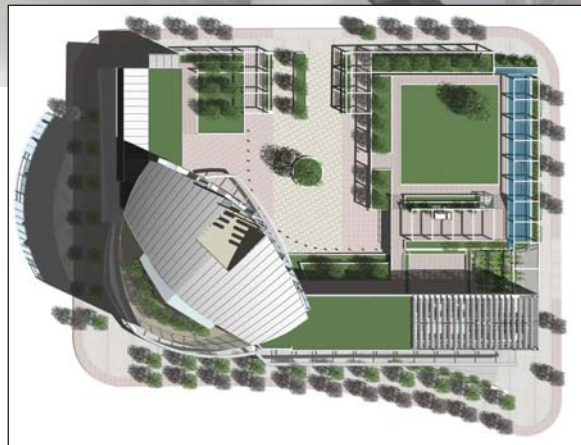
The project is proposed to be a "Green Building" that will be the first residential tower in Canada to be LEED™ Certifiable. Attaining this "Green" status would create prestige for both the City of Toronto and Concord Adex as responsible developers in a progressive civic environment.

In the order of 62 storeys in height, the tower grazes the skyline with a sleek outline. Its surface is transparent, refined and homogeneous. The clean and uninterrupted line of the exterior will be perforated by the warm incandescent lights of individual residences. As if echoing Toronto's transformation from daytime business to evening leisure, the towers will become softer, less singular as objects, and more telling of lives lived within. This transformation from day to night, cool to warm, is designed to provide interest within the larger visual scheme playing out against the urban backdrop.

The Signature Tower site also marks the junction of the new neighbourhood's two principal roadways; Spadina Avenue to the West and Bremner Boulevard to the South. Easily within walking distance of Toronto's downtown Queen Street, CN Tower and Harbourfront, the development of this site will become an important connection between the city of Toronto and its waterfront.



Aerial Context Rendering



Site Plan



Rear Axio Cut View



Spadina Lofts

Project Concord Adex Signature Tower
Location Toronto (Downtown)
Client Concord Adex Development Corp
Design 2002
Construction 2003

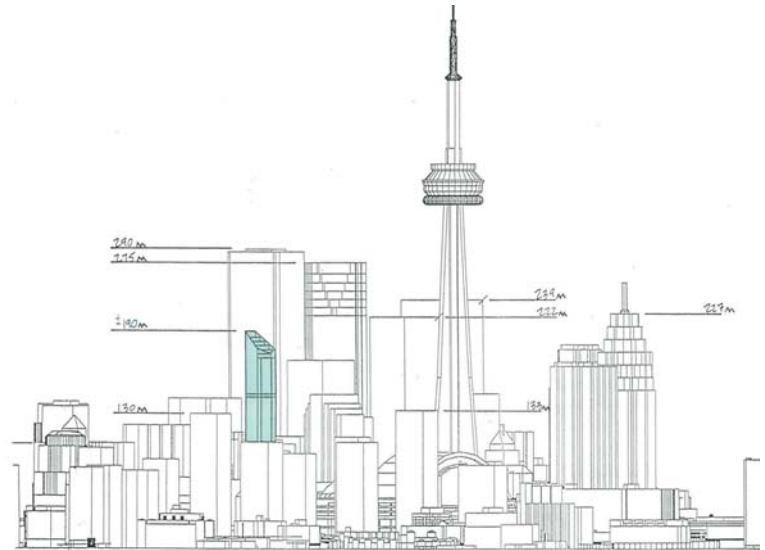
Technical
Building Size 69000 sq.m. (742,710 sq.ft.)
Budget \$120,000,000
Height 69 Storeys - 217.5 m. (713.583 ft.)
Materials
 - Glazing
 - Concrete
 - Metal Panels

Design Team
 Busby + Associates Architects (in association with Page + Steele):
 P. Busby, L. Chester, V. Gillies, J. Huffman, S. Jaramillo, H. Lai, V. Massah, A. Slawinski

Consultants
Structural Engineers Yolles Partnership
Electrical/Mechanical Engineers MCW Consultants Ltd
Landscape Ferris + Quinn Associates Inc
Owner Concord Adex Development Corp



Lake View



Downtown Toronto - With Tower